



Clinical Systems

**CLINICAL CHEMISTRY  
REAGENTS CATALOGUE**



# Clinical Chemistry Reagents

ELITechGroup is an established global manufacturer and distributor, with over 30 years of expertise in clinical laboratory instrumentation and reagents for In-Vitro Diagnostic (IVD) applications. ELITechGroup features a full range of clinical chemistry assays, benchmarked to industry standards, and available in dedicated system packs or generic format. ELITechGroup is committed to ongoing product development to expand the menu offering for all ELITechGroup systems.

## Selectra Solutions

The Selectra Family of bench top systems provide an efficient and cost effective solution for small to mid-sized laboratories. Selectra Pro and Selectra Mach®5 systems, combined with the Selectra reagents, calibrators and controls will deliver results that the laboratory can trust.



## Selectra reagents

The Selectra reagent line, consisting of liquid stable ready-to-use reagents, calibrators, controls and consumables are an integral part of the Selectra Pro & Mach5 systems. The reagent line forms the foundation of consistent, accurate and reliable results and, through an ongoing commitment to product development, test menu continues to broaden.

### ◆ RELIABILITY

Ready-to-use, liquid stable, barcoded reagents to minimize errors

### ◆ CONSISTENCY

Reproducible performance across the Selectra Family

### ◆ QUALITY

European design and manufacture (CE Marked)

## Quality matters

The system pack reagents are based on proven methodologies, referenced and traceable to industry standards for assured quality and laboratory peace of mind. ELITechGroup Clinical Systems maintains a quality management system certified according to ISO 13485:2016.

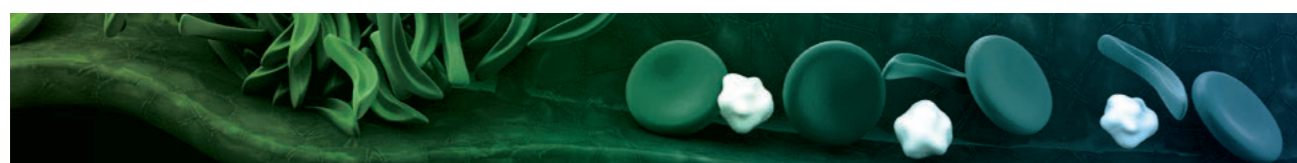
*Reagents, calibrators, controls and solutions are CE-marked, and compliance with European In Vitro Diagnostic Medical Device Regulations (IVDR) is pending*

## Complete System

ELITechGroup recommends ELITech Calibrator and Controls be used with ELITechGroup reagents. Refer to each Item for recommended Calibrator and /or Control. If no specific Calibrator and/or Control is listed for a specific item, ELICAL (Calibration); and ELITROL I and ELITROL II (Controls) are recommended.

## ► Mach series Mach5

### Anaemia



#### IRON

Reference	Method	Reagent 1	Reagent 2	Tests / Kit
<b>FEFE-M230</b>	FERENE	2 x 26 mL	2 x 8 mL	372

#### FERRITIN

Reference	Method	Reagent 1	Reagent 2	Tests / Kit
<b>IFRT-0230</b>	LATEX IMMUNO-TURBIDIMETRY Needs Calibrator IFRT-0042	2 x 20 mL	2 x 5 mL	200

#### TIBC

Reference	Method	Reagent 1	Reagent 2	Tests / Kit
<b>TIBC-M130</b>	DIRECT- CHROMAZUROL B	1 x 26 mL	1 x 9 mL	177

#### TRANSFERRIN

Reference	Method	Reagent 1	Reagent 2	Tests / Kit
<b>TRF2-M230</b>	IMMUNO-TURBIDIMETRY Needs Calibrator IPRO-0043 and control CONT-0060	2 x 26 mL	2 x 7 mL	372

### Cardiac



#### CHOLESTEROL

Reference	Method	Reagent 1	Reagent 2	Tests / Kit
<b>CHSL-M690</b>	CHOD - PAP	6 x 90 mL	-	3,126

#### CREATINE KINASE (CK NAC)

Reference	Method	Reagent 1	Reagent 2	Tests / Kit
<b>CKSL-M230</b>	IFCC	2 x 26 mL	2 x 8 mL	372

#### CREATINE KINASE - MB (CK-MB)

Reference	Method	Reagent 1	Reagent 2	Tests / Kit
<b>CMSL-0230</b>	IMMUNO-INHIBITION- IFCC Needs Control CKMB-0900	4 x 20 mL	1 x 20 mL	666

#### CHOLESTEROL HDL

Reference	Method	Reagent 1	Reagent 2	Tests / Kit
<b>CHDL-M330</b>	SELECTIVE DETERGENT Needs Calibrator HLCA-0041	3 x 22 mL	1 x 24 mL	468

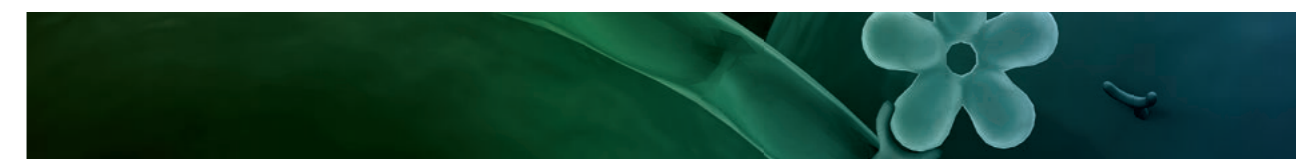
#### CHOLESTEROL LDL

Reference	Method	Reagent 1	Reagent 2	Tests / Kit
<b>CLDL-M330</b>	SELECTIVE DETERGENT Needs Calibrator HLCA-0041	3 x 22 mL	1 x 24 mL	468

#### TRIGLYCERIDES

Reference	Method	Reagent 1	Reagent 2	Tests / Kit
<b>TGML-M690</b>	GPO - PAP	6 x 90 mL	-	3,126

### Diabetes



#### GLUCOSE

Reference	Method	Reagent 1	Reagent 2	Tests / Kit
<b>GHSL-M490</b>	HEXOKINASE	4 x 89 mL	4 x 26 mL	2,068
<b>GPST-M690</b>	GLUCOSE OXIDASE - PAP	6 x 90 mL	-	3,126

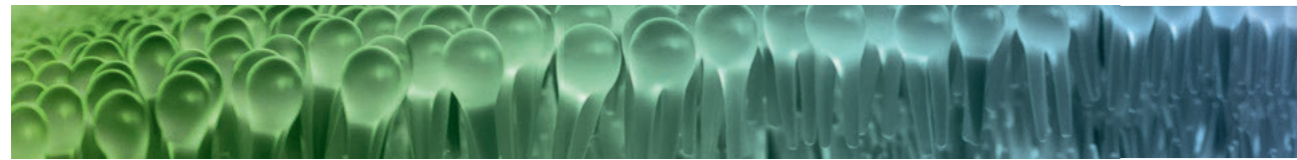
#### HEMOGLOBIN A1c (HbA1c)

Reference	Method	Reagent 1	Reagent 2	Tests / Kit
<b>HBAE-M130</b>	ENZYMATIC Needs Calibrator HBAE-0043 and Control HBAC-0049	1 x 26 mL	1 x 13 mL	217
		Reagent 3		
		2 x 53 mL		-

#### MICROALBUMIN (URINE)

Reference	Method	Reagent 1	Reagent 2	Tests / Kit
<b>IMAL-M230</b>	IMMUNO-TURBIDIMETRY Needs Calibrator IMAL-0043 and Controls IMAL-0046 and IMAL-0047	2 x 25 mL	1 x 12 mL	356

## General Chemistry



### ALBUMIN

Reference	Method	Reagent 1	Reagent 2	Tests / Kit
<b>ALBU-M830</b>	BROMOCRESOL GREEN (BCG)	8 x 25 mL	-	792

### ALKALINE PHOSPHATASE (ALP)

Reference	Method	Reagent 1	Reagent 2	Tests / Kit
<b>ALPI-0230</b>	IFCC	8 x 8 mL	4 x 4 mL	380

### ALANINE AMINOTRANSFERASE (ALT/GPT)

Reference	Method	Reagent 1	Reagent 2	Tests / Kit
<b>ALSL-M490</b>	IFCC	4 x 85 mL	4 x 26 mL	2,460

### AMYLASE

Reference	Method	Reagent 1	Reagent 2	Tests / Kit
<b>AMSL-M430</b>	CNPG3 Direct/IFCC TRACEABILITY	4 x 25 mL	-	740

### ASPARTATE AMINOTRANSFERASE (AST/GOT)

Reference	Method	Reagent 1	Reagent 2	Tests / Kit
<b>ASSL-M490</b>	IFCC	4 x 85 mL	4 x 26 mL	2,460

### URIC ACID

Reference	Method	Reagent 1	Reagent 2	Tests / Kit
<b>AUML-M830</b>	URICASE - PAP	8 x 25 mL	-	1,424

### BILIRUBIN DIRECT

Reference	Method	Reagent 1	Reagent 2	Tests / Kit
<b>BIDI-M430</b>	DIAZOTIZED SULPHANILIC ACID	4 x 26 mL	4 x 8 mL	744

### BILIRUBIN TOTAL

Reference	Method	Reagent 1	Reagent 2	Tests / Kit
<b>BITO-M430</b>	DIAZO REACTION/SURFACTANT ACCELERATOR	4 x 26 mL	4 x 8 mL	744

### CALCIUM

Reference	Method	Reagent 1	Reagent 2	Tests / Kit
<b>CALA-M430</b>	ARSENAZO III	4 x 25 mL	-	712

### CHOLINESTERASE

Reference	Method	Reagent 1	Reagent 2	Tests / Kit
<b>CHEB-0250</b>	DGKC/BUTYRYLTHIOCHOLINE METHOD	2 x 8 mL	1 x 5 mL	118

### CREATININE

Reference	Method	Reagent 1	Reagent 2	Tests / Kit
<b>CRSL-M490</b>	ENZYMATIC - PAP	4x 69 mL	4 x 26 mL	1,968

### GAMMA-GLUTAMYLTRANSFERASE (GAMMA-GT)

Reference	Method	Reagent 1	Reagent 2	Tests / Kit
<b>GISL-M230</b>	IFCC-GLUPA-C	4 x 26 mL	4 x 8 mL	372

### LACTATE DEHYDROGENASE (LDH)

Reference	Method	Reagent 1	Reagent 2	Tests / Kit
<b>LLSL-M230</b>	IFCC LACTATE TO PYRUVATE	2 x 26 mL	2 x 8 mL	372

### LIPASE

Reference	Method	Reagent 1	Reagent 2	Tests / Kit
<b>LPSL-0250</b>	COLORIMETRIC, DGGM	2 x 8 mL	2 x 6 mL	98

### MAGNESIUM

Reference	Method	Reagent 1	Reagent 2	Tests / Kit
<b>MGXB-M430</b>	XYLIDYL BLUE	4 x 23 mL	-	392

### PHOSPHORUS

Reference	Method	Reagent 1	Reagent 2	Tests / Kit
<b>PHOS-M430</b>	PHOSPHOMOLYBDATE	4 x 25 mL	-	444

### PROTEIN TOTAL (SERUM)

Reference	Method	Reagent 1	Reagent 2	Tests / Kit
<b>PROB-M830</b>	BIURET	8 x 25 mL	-	1,184

### PROTEIN TOTAL (URINE)

Reference	Method	Reagent 1	Standard	Tests / Kit
<b>PRTU-M230</b>	PYROGALLOL RED Standard included	2 x 26 mL	1 x 2 mL	356

### UREA

Reference	Method	Reagent 1	Reagent 2	Tests / Kit
<b>URSL-M830</b>	UREASE - GLDH	8 x 25 mL	8 x 8 mL	1,480

## Specific Proteins & Special Chemistry



### ANTI-STREPTOLYSIN O

Reference	Method	Reagent 1	Reagent 2	Tests / Kit
<b>ASLO-0250</b>	LATEX - IMMUNO-TURBIDIMETRY Calibrator included (1x 1mL) Needs Controls IRCT-0046 and IRCT-0047	2 x 25 mL	1 x 6 mL	220

### CRP

Reference	Method	Reagent 1	Reagent 2	Tests / Kit
<b>ICRP-M230</b>	IMMUNO-TURBIDIMETRY Needs Calibrator ICRP-0043 and IRCT-0046 and 0047	2 x 26 mL	1 x 9 mL	372

### HAPTOGLOBIN

Reference	Method	Reagent 1	Reagent 2	Tests / Kit
<b>IHAP-0400</b>	IMMUNO-TURBIDIMETRY Needs Calibrator IPRO-0043	2 x 25 mL	1 x 5 mL	148

### IGA

Reference	Method	Reagent 1	Reagent 2	Tests / Kit
<b>IIGA-0400</b>	IMMUNO-TURBIDIMETRY Needs Calibrator IPRO-0043	2 x 25 mL	1 x 5 mL	129

### IGG

Reference	Method	Reagent 1	Reagent 2	Tests / Kit
<b>IIGG-0400</b>	IMMUNO-TURBIDIMETRY Needs Calibrator IPRO-0043	2 x 25 mL	1 x 5 mL	114

### IGM

Reference	Method	Reagent 1	Reagent 2	Tests / Kit
<b>IIGM-0400</b>	IMMUNO-TURBIDIMETRY Needs Calibrator IPRO-0043	2 x 25 mL	1 x 5 mL	160

### ALPHA-1-ACID GLYCOPROTEIN / OROSOMUCOID

Reference	Method	Reagent 1	Reagent 2	Tests / Kit
<b>IORO-0400</b>	IMMUNO-TURBIDIMETRY Needs Calibrator IPRO-0043	2 x 25 mL	1 x 5 mL	148

### PREALBUMIN

Reference	Method	Reagent 1	Reagent 2	Tests / Kit
<b>IPAL-0400</b>	IMMUNO-TURBIDIMETRY Needs Calibrator IPRO-0043	2 x 25 mL	1 x 5 mL	144

### RHEUMATOID FACTOR

Reference	Method	Reagent 1	Reagent 2	Tests / Kit
<b>RHFA-M130</b>	IMMUNO-TURBIDIMETRY Needs Controls IRCT-0046 and IRCT-0047	1 x 26 mL	1 x 7 mL	185

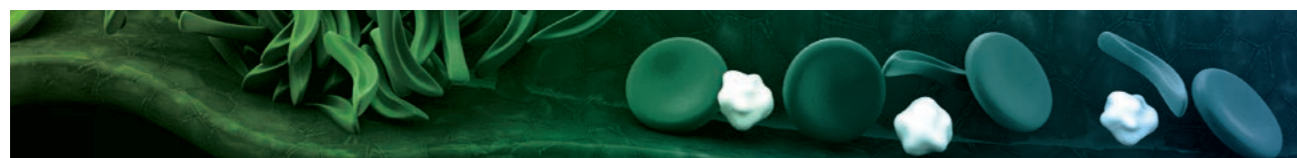
### VITAMIN D

Reference	Method	Reagent 1	Reagent 2	Tests / Kit
<b>VITD-0250</b>	LATEX - IMMUNO-TURBIDIMETRY Needs Calibrator VITD-0043 and Control VITD-0049	2 x 21 mL	2 x 5 mL	248



▶ PRO series  
XS, S, M & XL

Anaemia



IRON

Reference	Method	Reagent 1	Reagent 2	Tests / Kit
<b>FEFE-0230</b>	FERENE	4 x 14.6 mL	4 x 3.9 mL	200

FERRITIN

Reference	Method	Reagent 1	Reagent 2	Tests / Kit
<b>IFRT-0230</b>	LATEX IMMUNO-TURBIDIMETRY Needs Calibrator IFRT-0042	2 x 20 mL	2 x 5 mL	176

TIBC

Reference	Method	Reagent 1	Reagent 2	Tests / Kit
<b>TIBC-0250</b>	DIRECT- CHROMAZUROL B	2 x 25 mL	2 x 7 mL	194

TRANSFERRIN

Reference	Method	Reagent 1	Reagent 2	Tests / Kit
<b>ITRF-0400</b>	IMMUNO-TURBIDIMETRY Needs Calibrator IPRO-0043	5 x 25 mL	1 x 5 mL	400

Cardiac



CHOLESTEROL

Reference	Method	Reagent 1	Reagent 2	Tests / Kit
<b>CHSL-0250</b>	CHOD-PAP	12 x 20 mL	-	684

CREATINE KINASE (CK NAC)

Reference	Method	Reagent 1	Reagent 2	Tests / Kit
<b>CKSL-0230</b>	IFCC	4 x 20 mL	4 x 5 mL	320

CREATINE KINASE-MB (CK-MB)

Reference	Method	Reagent 1	Reagent 2	Tests / Kit
<b>CMSL-0230</b>	IMMUNO-INHIBITION-IFCC	4 x 20 mL	1 x 20 mL	320

CHOLESTEROL HDL

Reference	Method	Reagent 1	Reagent 2	Tests / Kit
<b>CHDL-0250</b>	SELECTIVE DETERGENT Needs Calibrator HLCA-0041	4 x 21 mL	2 x 14 mL	316

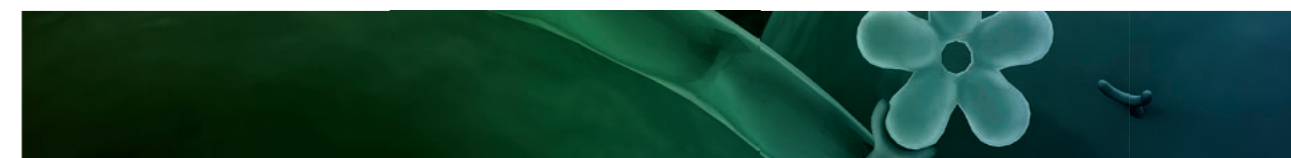
CHOLESTEROL LDL

Reference	Method	Reagent 1	Reagent 2	Tests / Kit
<b>CLDL-0250</b>	SELECTIVE DETERGENT Needs Calibrator HLCA-0041	4 x 21 mL	2 x 14 mL	316

TRIGLYCERIDES

Reference	Method	Reagent 1	Reagent 2	Tests / Kit
<b>TGML-0250</b>	GPO-PAP	12 x 20 mL	-	684

Diabetes



GLUCOSE

Reference	Method	Reagent 1	Reagent 2	Tests / Kit
<b>GHSL-0250</b>	HEXOKINASE	8 x 20 mL	8 x 5 mL	456
<b>GPSL-0250</b>	GLUCOSE OXIDASE-PAP	12 x 20 mL	-	684

HEMOGLOBIN A1C (HbA1c)

Reference	Method	Reagent 1	Reagent 2	Tests / Kit
<b>HBAC-0240</b>	LATEX- IMMUNO-TURBIDIMETRY Needs Calibrator HBAC-0043	1 x 24 mL	1 x 7.6 mL	89
		<b>Reagent 3</b>	<b>Reagent 4</b>	
		1 x 0.4 mL	4 x 25 mL	-

MICROALBUMIN (URINE)

Reference	Method	Reagent 1	Reagent 2	Tests / Kit
<b>IMAL-0400</b>	IMMUNO-TURBIDIMETRY Needs Calibrator IMAL-0043 and Controls IMAL-0046 and IMAL-0047	2 x 25 mL	1 x 5 mL	100

## General Chemistry



### ALBUMIN

Reference	Method	Reagent 1	Reagent 2	Tests / Kit
<b>ALBU-0250</b>	BROMOCRESOL GREEN (BCG)	12 x 20 mL	-	576

### ALKALINE PHOSPHATASE (ALP)

Reference	Method	Reagent 1	Reagent 2	Tests / Kit
<b>ALPI-0230</b>	IFCC	8 x 8.8 mL	4 x 4.8 mL	328
<b>PASL-0230</b>	DGKC/SCE DEA BUFFER	4 x 20 mL	4 x 5 mL	320

### ALANINE AMINOTRANSFERASE (ALT/GPT)

Reference	Method	Reagent 1	Reagent 2	Tests / Kit
<b>ALSL-0250</b>	IFCC	8 x 20 mL	8 x 5 mL	528

### AMYLASE

Reference	Method	Reagent 1	Reagent 2	Tests / Kit
<b>AMSL-0230</b>	CNPG3 Direct/IFCC TRACEABILITY	6 x 20 mL	-	342

### ASPARTATE AMINOTRANSFERASE (AST/GOT)

Reference	Method	Reagent 1	Reagent 2	Tests / Kit
<b>ASSL-0250</b>	IFCC	8 x 20 mL	8 x 5 mL	528

### URIC ACID

Reference	Method	Reagent 1	Reagent 2	Tests / Kit
<b>AUSL-0250</b>	URICASE-PAP-DUAL REAGENT	8 x 20 mL	8 x 5 mL	512
<b>AUML-0250</b>	URICASE-PAP	12 x 20 mL	-	816

### BILIRUBIN DIRECT

Reference	Method	Reagent 1	Reagent 2	Tests / Kit
<b>BIDI-0250</b>	DIAZOTIZED SULPHANILIC ACID	8 x 20 mL	8 x 5 mL	528

### BILIRUBIN TOTAL

Reference	Method	Reagent 1	Reagent 2	Tests / Kit
<b>BITO-0250</b>	DIAZO REACTION/SURFACTANT ACCELERATOR	8 x 20 mL	8 x 5 mL	528

### CALCIUM

Reference	Method	Reagent 1	Reagent 2	Tests / Kit
<b>CALA-0250</b>	ARSENAZO III	12 x 20 mL	-	684

### CHOLINESTERASE

Reference	Method	Reagent 1	Reagent 2	Tests / Kit
<b>CHEB-0250</b>	DGKC / BUTYRYLTHIOCHOLINE METHOD	1 x 8 mL	1 x 5 mL	68

### CREATININE

Reference	Method	Reagent 1	Reagent 2	Tests / Kit
<b>CRSL-0250</b>	ENZYMATIC-PAP	8 x 21 mL	8 x 7 mL	664

### GAMMA-GLUTAMYLTRANSFERASE (GAMMA-GT)

Reference	Method	Reagent 1	Reagent 2	Tests / Kit
<b>GISL-0250</b>	IFCC-GLUPA-C	8 x 20 mL	8 x 5 mL	576

### LACTATE DEHYDROGENASE (LDH)

Reference	Method	Reagent 1	Reagent 2	Tests / Kit
<b>LLSL-0230</b>	IFCC (LACTATE to PYRUVATE)	4 x 20 mL	4 x 5 mL	320

### LIPASE

Reference	Method	Reagent 1	Reagent 2	Tests / Kit
<b>LPSL-0250</b>	COLOURIMETRIC DGGM SUBSTRATE	2 x 8 mL	2 x 6 mL	98

### MAGNESIUM

Reference	Method	Reagent 1	Reagent 2	Tests / Kit
<b>MGXB-0250</b>	XYLIDYL BLUE	6 x 24 mL	-	420

### PHOSPHORUS

Reference	Method	Reagent 1	Reagent 2	Tests / Kit
<b>PHOS-0230</b>	PHOSPHOMOLYBDATE -UV	6 x 20 mL	-	342

### TOTAL PROTEIN

Reference	Method	Reagent 1	Reagent 2	Tests / Kit
<b>PROB-0250</b>	BIURET	12 x 20 mL	-	684

### TOTAL PROTEIN-URINE

Reference	Method	Reagent 1	Reagent 2	Standard
<b>PRTU-0600</b>	PHOSPHOMOLYBDATE-UV Standard included	2 x 125 mL		1 x 5 mL

### UREA

Reference	Method	Reagent 1	Reagent 2	Tests / Kit
<b>URSL-0250</b>	UREASE-GLDH	8 x 20 mL	8 x 5 mL	528

## Specific Proteins & Special Chemistry



### ANTI-STREPTOLYSIN O

Reference	Method	Reagent 1	Reagent 2	Tests / Kit
<b>ASLO-0250</b>	LATEX-IMMUNO-TURBIDIMETRY calibrator included (1 x 1 mL) Needs Controls IRCT-0046 and IRCT-0047	2 x 25 mL	1 x 6 mL	212

### CRP

Reference	Method	Reagent 1	Reagent 2	Tests / Kit
<b>ICRP-0400</b>	IMMUNO-TURBIDIMETRY Needs Calibrator ICRP-0043 and Controls ICRP-0046 and ICRP-0047	2 x 25 mL	1 x 5 mL	160

### HAPTOGLOBIN

Reference	Method	Reagent 1	Reagent 2	Tests / Kit
<b>IHAP-0400</b>	IMMUNO-TURBIDIMETRY Needs Calibrator IPRO-0043	2 x 25 mL	1 x 5 mL	100

### IGA

Reference	Method	Reagent 1	Reagent 2	Tests / Kit
<b>IIGA-0400</b>	IMMUNO-TURBIDIMETRY Needs Calibrator IPRO-0043	2 x 25 mL	1 x 5 mL	80

### IGG

Reference	Method	Reagent 1	Reagent 2	Tests / Kit
<b>IIGA-0400</b>	IMMUNO-TURBIDIMETRY Needs Calibrator IPRO-0043	2 x 25 mL	1 x 5 mL	160

### IGM

Reference	Method	Reagent 1	Reagent 2	Tests / Kit
<b>IIGM-0400</b>	IMMUNO-TURBIDIMETRY Needs Calibrator IPRO-0043	2 x 25 mL	1 x 5 mL	100

### ALPHA-1-ACID GLYCOPROTEIN / OROSOMUCOID

Reference	Method	Reagent 1	Reagent 2	Tests / Kit
<b>IORO-0400</b>	IMMUNO-TURBIDIMETRY Needs Calibrator IPRO-0043	2 x 25 mL	1 x 5 mL	100

### PREALBUMIN

Reference	Method	Reagent 1	Reagent 2	Tests / Kit
<b>IPAL-0400</b>	IMMUNO-TURBIDIMETRY Needs Calibrator IPRO-0043	2 x 25 mL	1 x 5 mL	194

### RHEUMATOID FACTOR

Reference	Method	Reagent 1	Reagent 2	Tests / Kit
<b>IRFA-0230</b>	IMMUNO-TURBIDIMETRY Calibrator IRFA-0042 and Controls IRCT-0046 and IRCT-0047	2 x 20 mL	2 x 5 mL	144

### VITAMIN D

Reference	Method	Reagent 1	Reagent 2	Tests / Kit
<b>VITD-0250</b>	LATEX-IMMUNO-TURBIDIMETRY Needs Calibrator VITD-0043 and Control VITD-0049	2 x 21 mL	2 x 5 mL	202

## Ion Selective Electrode Consumables

### ISE CALIBRATORS

Reference	Description	Configuration	
<b>ISCA-0250</b>	CAL L	6 x 20 mL	6 x 20 mL
	CAL H	6 x 20 mL	

### ISE CONTROL

Reference	Description	Configuration	
<b>ISCT-0046</b>	ISE CONTROL I	10 x 5 mL	
<b>ISCT-0047</b>	ISE CONTROL II	10 x 5 mL	

### ISE CONSUMABLES

Reference	Description	Configuration	
<b>ISRS-0800</b>	ISE REFERENCE SOLUTION	1 x 500 mL	-
<b>ISDI-0250</b>	ISE DILUENT	12 x 25 mL	-
<b>ISCC-0280</b>	ISE CLEANER/CONDITIONER	6 x 8 mL	3 x 25 mL



## ▶ System Solutions & Consumables

### System Solutions



Reference	Description	Configuration
<b>SLHC-5900</b>	ACID SOLUTION	1 x 1 L
<b>SLSY-5905</b>	SYSTEM SOLUTION	1 x 1 L

### Reagent Containers

#### PRO SERIES

Reference	Description	Configuration
<b>CVTL-1010</b>	ECS VIALS / CAPS 10 mL	1x 10 units
<b>CVTL-2530</b>	ECS VIALS / CAPS 25 mL	1x 30 units
<b>CVTL-5010</b>	ECS VIALS / CAPS 50 mL	1x 10 units

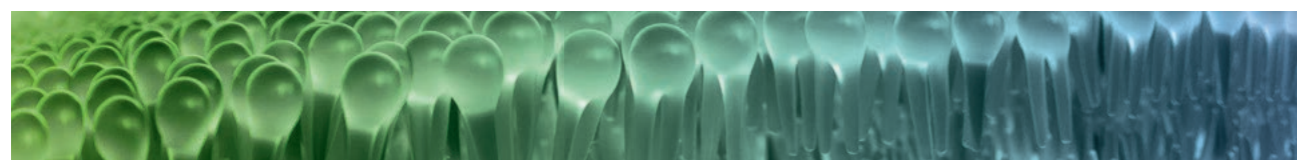
#### MACH SERIES

Reference	Description	Configuration
<b>CMAC-1084</b>	ECS LARGE WEDGE/CAP	4 UNITS / pack
<b>CMAC-3010</b>	ECS SMALL WEDGE/CAP	10 UNITS / pack



## General Clinical Chemistry Reagents

### General Chemistry



#### ALBUMIN

Reference	Method	Reagent 1	Reagent 2	Standard
<b>ALBU-0600</b>	BROMOCRESOL GREEN (BCG) Standard included	2 x 125 mL	-	1 x 2 mL

#### ALKALINE PHOSPHATASE (ALP)

Reference	Method	Reagent 1	Reagent 2	Standard
<b>PASL-0400</b>	DGKC/SCE DEA BUFFER	2 x 50 mL	1 x 26 mL	-
<b>PASL-0420</b>	DGKC/SCE DEA BUFFER	4 x 50 mL	2 x 26 mL	-

#### ALANINE AMINOTRANSFERASE (ALT/GPT)

Reference	Method	Reagent 1	Reagent 2	Standard
<b>ALSL-0410</b>	IFCC	2 x 50 mL	1 x 26 mL	-
<b>ALSL-0430</b>	IFCC	4 x 50 mL	2 x 26 mL	-
<b>ALSL-0510</b>	IFCC	5 x 100 mL	1 x 127 mL	-

#### AMYLASE

Reference	Method	Reagent 1	Reagent 2	Standard
<b>AMSL-0390</b>	CNPG3 DIRECT/IFCC TRACEABILITY	1 x 50 mL	-	-
<b>AMSL-0400</b>	CNPG3 DIRECT/IFCC TRACEABILITY	6 x 50 mL	-	-

#### ASPARTATE AMINOTRANSFERASE (AST/GOT)

Reference	Method	Reagent 1	Reagent 2	Standard
<b>ASSL-0410</b>	IFCC	2 x 50 mL	1 x 26 mL	-
<b>ASSL-0430</b>	IFCC	4 x 50 mL	2 x 26 mL	-
<b>ASSL-0510</b>	IFCC	5 x 100 mL	1 x 127 mL	-

#### BILIRUBIN DIRECT

Reference	Method	Reagent 1	Reagent 2	Standard
<b>BIDI-0600</b>	DIAZOTIZED SULPHANILIC ACID	2 x 100 mL	1 x 50 mL	-

#### BILIRUBIN TOTAL

Reference	Method	Reagent 1	Reagent 2	Standard
<b>BITO-0600</b>	DIAZO REACTION/SURFACTANT ACCELERATOR	2 x 100 mL	1 x 50 mL	-

#### CALCIUM

Reference	Method	Reagent 1	Reagent 2	Standard
<b>CALA-0600</b>	ARSENAZO III Standard included	2 x 125 mL	-	1 x 5 mL

#### CHOLESTEROL HDL

Reference	Method	Reagent 1	Reagent 2	Standard
<b>CHDL-0600</b>	SELECTIVE DETERGENT	2 x 90 mL	1 x 60 mL	-

#### CHOLESTEROL

Reference	Method	Reagent 1	Reagent 2	Standard
<b>CHSL-0507</b>	CHOD-PAP Standard included	6 x 100 mL	-	1 x 5 mL
<b>CHSL-0707</b>	CHOD-PAP Standard included	4 x 250 mL	-	1 x 5 mL

#### CREATINE KINASE (CK NAC)

Reference	Method	Reagent 1	Reagent 2	Standard
<b>CKSL-0410</b>	IFCC	2 x 50 mL	1 x 26 mL	-
<b>CKSL-0430</b>	IFCC	4 x 50 mL	2 x 26 mL	-

#### CREATINE KINASE-MB (CK-MB)

Reference	Method	Reagent 1	Reagent 2	Standard
<b>CMSL-0410</b>	IMMUNOINHIBITION-IFCC	2 x 50 mL	1 x 26 mL	-

#### CREATININE

Reference	Method	Reagent 1	Reagent 2	Standard
<b>CRCO-0600</b>	KINETIC JAFFE Standard included	1 x 125 mL	1 x 125 mL	1 x 5 mL
<b>CRSL-0630</b>	ENZYMATIC-PAP	2 x 100 mL	1 x 70 mL	-

#### GAMMA-GLUTAMYLTRANSFERASE (GAMMA-GT)

Reference	Method	Reagent 1	Reagent 2	Standard
<b>GISL-0400</b>	IFCC-GLUPA-C	2 x 50 mL	1 x 26 mL	-
<b>GISL-0420</b>	IFCC-GLUPA-C	4 x 50 mL	2 x 26 mL	-

#### GLUCOSE

Reference	Method	Reagent 1	Reagent 2	Standard
<b>GPSL-0507</b>	GLUCOSE OXIDASE Standard included	6 x 100 mL	-	1 x 5 mL
<b>GPSL-0707</b>	GLUCOSE OXIDASE Standard included	4 x 250 mL	-	1 x 5 mL

#### IRON

Reference	Method	Reagent 1	Reagent 2	Standard
<b>FEFE-0600</b>	FERENE Standard included	2 x 100 mL	1 x 50 mL	1 x 5 mL

## General Chemistry (Cont'd)

### LACTATE DEHYDROGENASE (LDH)

Reference	Method	Reagent 1	Reagent 2	Standard
<b>LLSL-0400</b>	IFCC (LACTATE TO PYRUVATE)	2 x 50 mL	1 x 26 mL	-
<b>LLSL-0420</b>	IFCC (LACTATE TO PYRUVATE)	4 x 50 mL	2 x 26 mL	-

### MAGNESIUM

Reference	Method	Reagent 1	Reagent 2	Standard
<b>MGXB-0600</b>	XYLIDYL BLUE Standard included	2 x 100 mL	-	1 x 5 mL

### TOTAL PROTEIN (URINE)

Reference	Method	Reagent 1	Reagent 2	Standard
<b>PRTU-0600</b>	PYROGALLOL RED Standard included	2 x 125 mL	-	1 x 2 mL

### PHOSPHORUS

Reference	Method	Reagent 1	Reagent 2	Standard
<b>PHOS-0600</b>	PHOSPHOMOLYBDATE-UV Standard included	2 x 125 mL	-	1 x 5 mL

### TOTAL PROTEIN (SERUM)

Reference	Method	Reagent 1	Reagent 2	Standard
<b>PROB-0600</b>	BIURET Standard included	2 x 125 mL	-	1 x 5 mL

### TRIGLYCERIDES

Reference	Method	Reagent 1	Reagent 2	Standard
<b>TGML-0427</b>	GPO-PAP Standard included	6 x 50 mL	-	1 x 5 mL
<b>TGML-0517</b>	GPO-PAP Standard included	6 x 100 mL	-	1 x 5 mL
<b>TGML-0707</b>	GPO-PAP Standard included	4 x 250 mL	-	1 x 5 mL

### UREA

Reference	Method	Reagent 1	Reagent 2	Standard
<b>URSL-0427</b>	UREASE/GLDH Standard included	4 x 50 mL	2 x 26 mL	1 x 5 mL
<b>URSL-0507</b>	UREASE/GLDH Standard included	5 x 100 mL	1 x 127 mL	1 x 5 mL

### URIC ACID

Reference	Method	Reagent 1	Reagent 2	Standard
<b>AUML-0427</b>	URICASE-PAP Standard included	6 x 50 mL	-	1 x 5 mL
<b>AUML-0507</b>	URICASE-PAP Standard included	6 x 100 mL	-	1 x 5 mL



## ▶ Calibrators, Controls & Standards

### Calibrators (Human Based)

Reference	Description	Configuration
<b>CALI-0550</b>	ELICAL 2 MULTIPARAMETRIC	4 x 3 mL

Reference	Description	Configuration
<b>HLCA-0041</b>	LIPID CALIBRATOR (HDL & LDL CHOL)	2 x 1 mL

Reference	Description	Configuration
<b>VITD-004</b>	Vit D Calibrator set 5 Levels	5 x 1 mL

### Controls (Human Based)

Reference	Description	Configuration
<b>CONT-0060</b>	ELITROL I MULTIPARAMETRIC	10 x 5 mL
<b>CONT-0160</b>	ELITROL II MULTIPARAMETRIC	10 x 5 mL
<b>CKMB-0900</b>	CK-MB	4 x 3 mL

### Specific Proteins Calibrators & Controls

#### CRP CALIBRATOR SET

Reference	Configuration
<b>ICRP-0043</b>	5 LEVELS 5 x 1 mL

#### CRP CONTROL

Reference	Configuration
<b>ICRP-0046</b>	CRP CONTROL I 2 x 1 mL
<b>ICRP-0047</b>	CRP CONTROL II 2 x 1 mL

#### FERRITIN CALIBRATOR

Reference	Configuration
<b>IFRT-0042</b>	FERRITIN CALIBRATOR 2 x 3 mL

#### HbA1c CALIBRATORS

Reference	Configuration
<b>HBAC-0043</b>	FOR USE WITH HBAC-0240 4 LEVELS 4 x 0.5 mL
<b>HBAE-0043</b>	FOR USE WITH HBAE-M130 2 LEVELS 2 x 0.5 mL

#### HbA1c CONTROLS

Reference	Configuration
<b>HBAC-0049</b>	FOR USE WITH HBAC-0043 & HBAE-0043 4 x 0.5 mL

#### MICROALBUMIN (URINE) CALIBRATOR SET

Reference	Configuration
<b>IMAL-0043</b>	5 LEVELS 5 x 1 mL

#### MICROALBUMIN (URINE) CONTROL I

Reference	Configuration
<b>IMAL-0046</b>	CONTROL I 2 x 1 mL
<b>IMAL-0047</b>	CONTROL II 2 x 1 mL

#### PROTEIN CALIBRATOR SET

Reference	Configuration
<b>IPro-0043</b>	5 LEVELS 5 x 1 mL

#### RF CALIBRATOR

Reference	Configuration
<b>IRFA-0042</b>	RF CALIBRATOR 2 x 2 mL

#### RHEUMATOLOGY CONTROL I

Reference	Configuration
<b>IRCT-0046</b>	CONTROL I 2 x 1 mL
<b>IRCT-0047</b>	CONTROL II 2 x 1 mL

#### VITAMIN D CONTROL

Reference	Configuration
<b>VITD-0049</b>	BI-LEVEL CONTROLS 2 x 3 mL



## ELITECHGROUP

ELITechGroup is a global leader in Clinical Chemistry, with over 50,000 systems delivered. Our scalable systems are designed around the laboratory's most important needs – reliability and consistency.

ELITechGroup Clinical Systems have performance and quality designed into the complete system across all key components:

- Analyzers
- Liquid stable reagents
- Calibrators & controls
- ISE (Ion-Selective Electrode)
- Service and training

With a strong heritage of reliability and performance, with Selectra Family solutions your laboratory can grow with confidence.



ELITech Clinical Systems SAS (France)

ELITechGroup B.V. (The Netherlands)



**ELITechGroup**

EMPOWERING IVD

[www.elitechgroup.com](http://www.elitechgroup.com)  
[info@elitechgroup.com](mailto:info@elitechgroup.com)

For In Vitro diagnostics medical devices: read carefully information available on labelling and/or on the instructions for use and/or in the user manual.

©2021, Selectra Mach is a registered Trademark of ELITechGroup B.V. Availability may be subject to regulatory requirements. Please contact your local representative or email [sales.ecsnl@elitechgroup.com](mailto:sales.ecsnl@elitechgroup.com) for information on the availability of these products in your area.